

LOPEZ HILL MICROCLIMATES 2007-2008

Site characteristics

<i>Site</i>	<i>Relative position</i>	<i>Aspect</i>	<i>Elevation</i>
Loggers Camp	Farthest NE, E of summit	NE	300
Licorice Hill	East of summit	NE	400
Spanish Moss	West side of summit	W	470
The Thicket	Farthest SW	SW	420

Temperature statistics (in ° Fahrenheit)



<i>Site</i>	<i>Maximum</i>	<i>Minimum</i>	<i>Mean</i>	<i>SD</i>
Loggers Camp	92.74	22.78	40.52	7.86
Licorice Hill	68.42	26.88	40.59	5.57
Spanish Moss	73.93	27.30	41.14	5.67
The Thicket	89.76	26.88	40.44	6.19

Light statistics (in lumens/square foot)

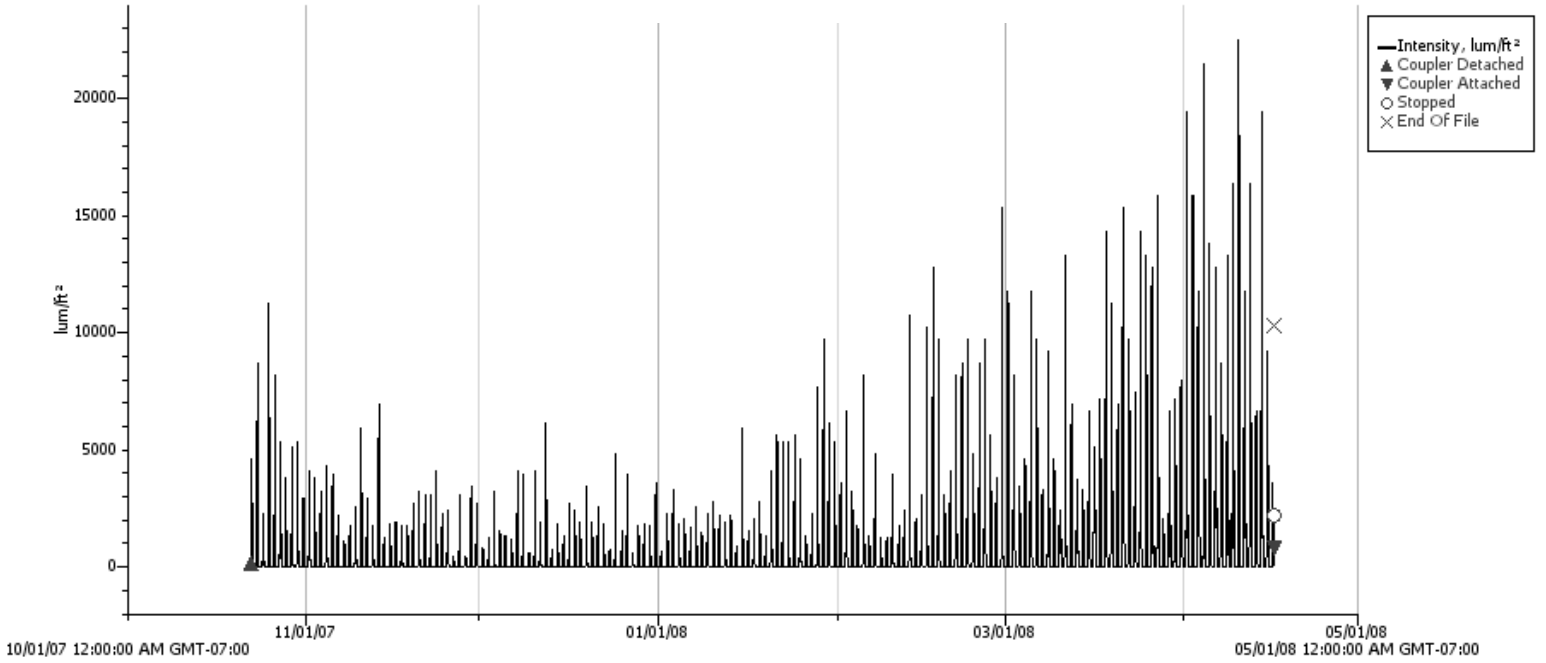


<i>Site</i>	<i>Maximum</i>	<i>Minimum</i>	<i>Mean</i>	<i>SD</i>
Loggers Camp	12,755	0	700.4	1,773
Licorice Hill	9,216	0	280.7	578
Spanish Moss	12,800	0	208.6	496
The Thicket	20,480	0	445.5	1,336

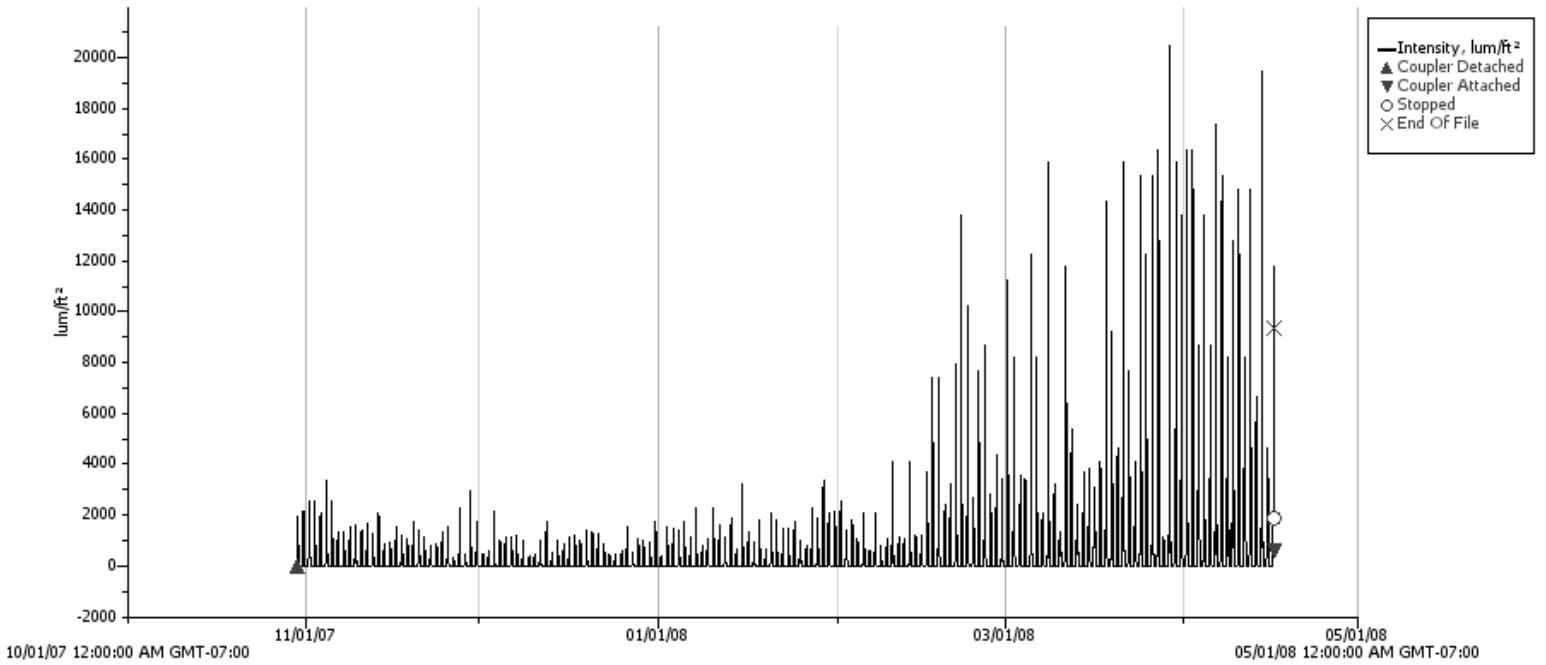


LOPEZ HILL MICROCLIMATES 2007-2008: LIGHT LEVELS

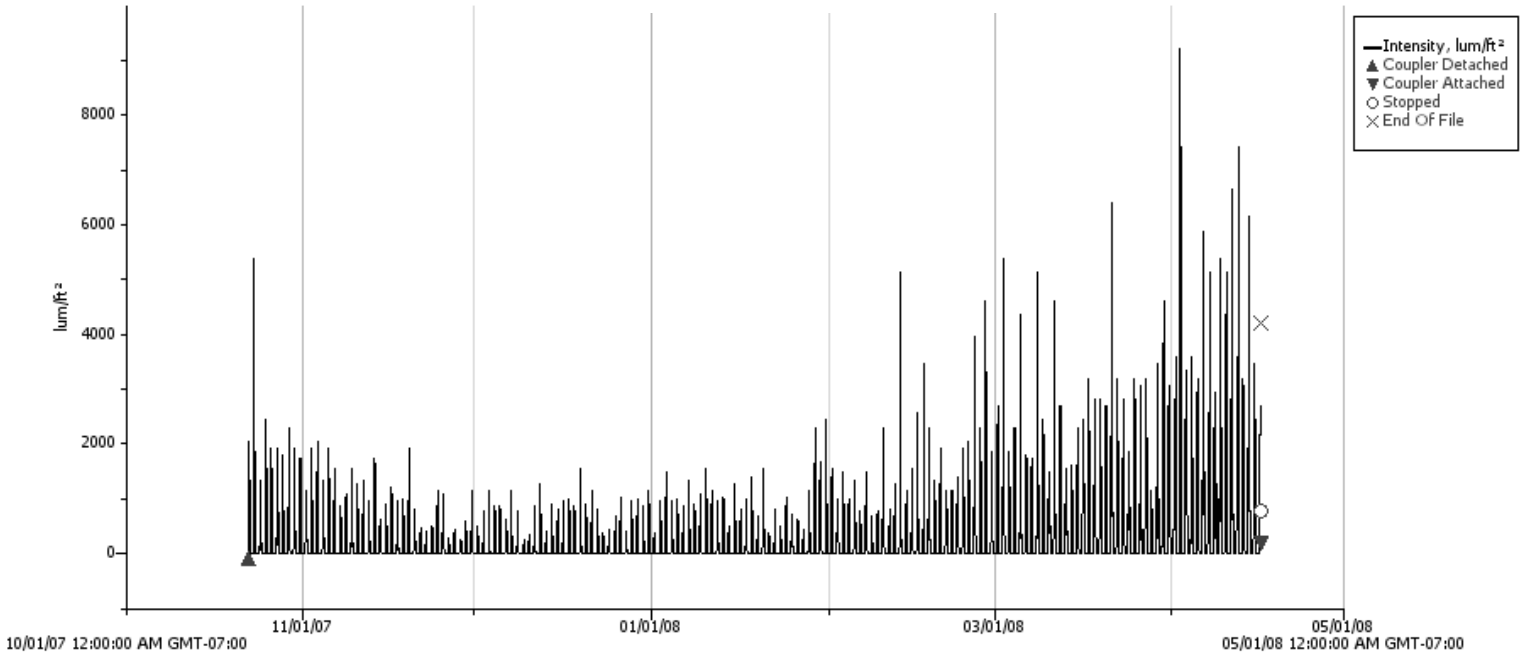
Loggers Camp (easternmost)



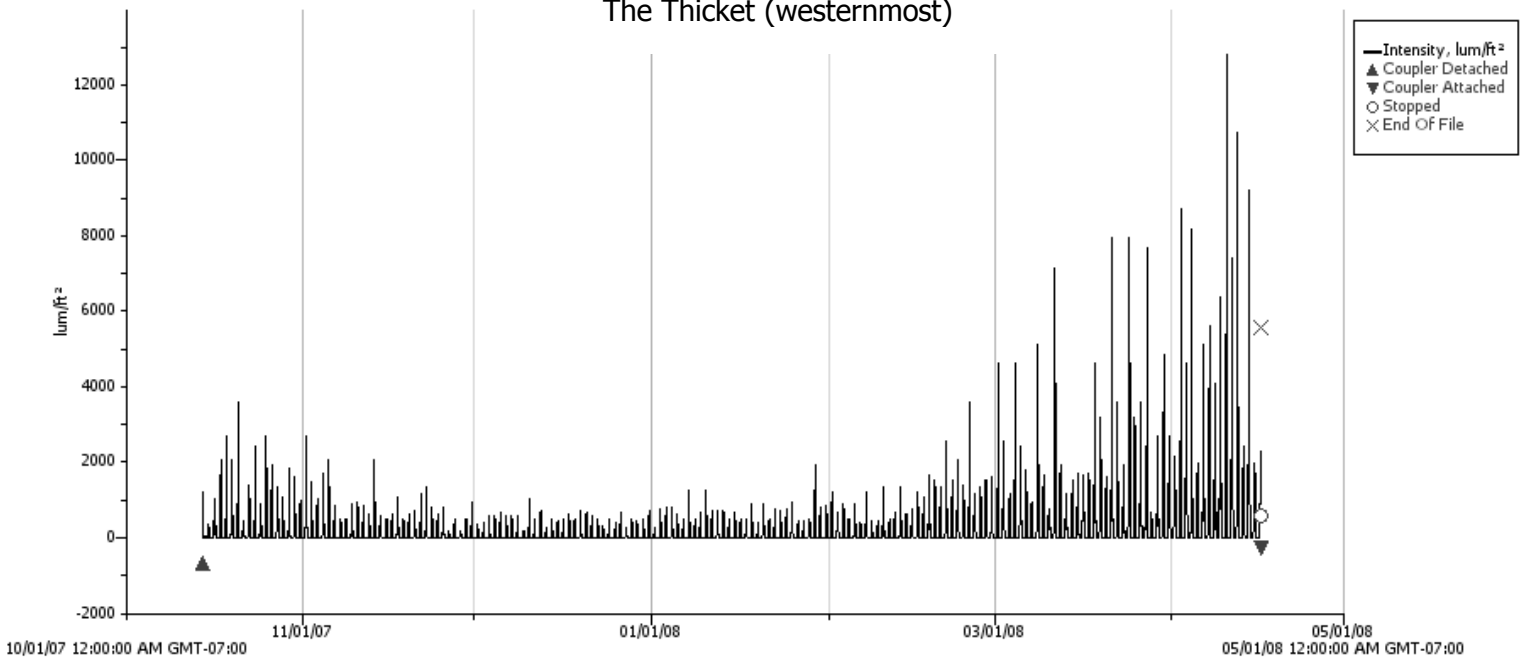
The Thicket (westernmost)



Licorice Hill (ridge center east)

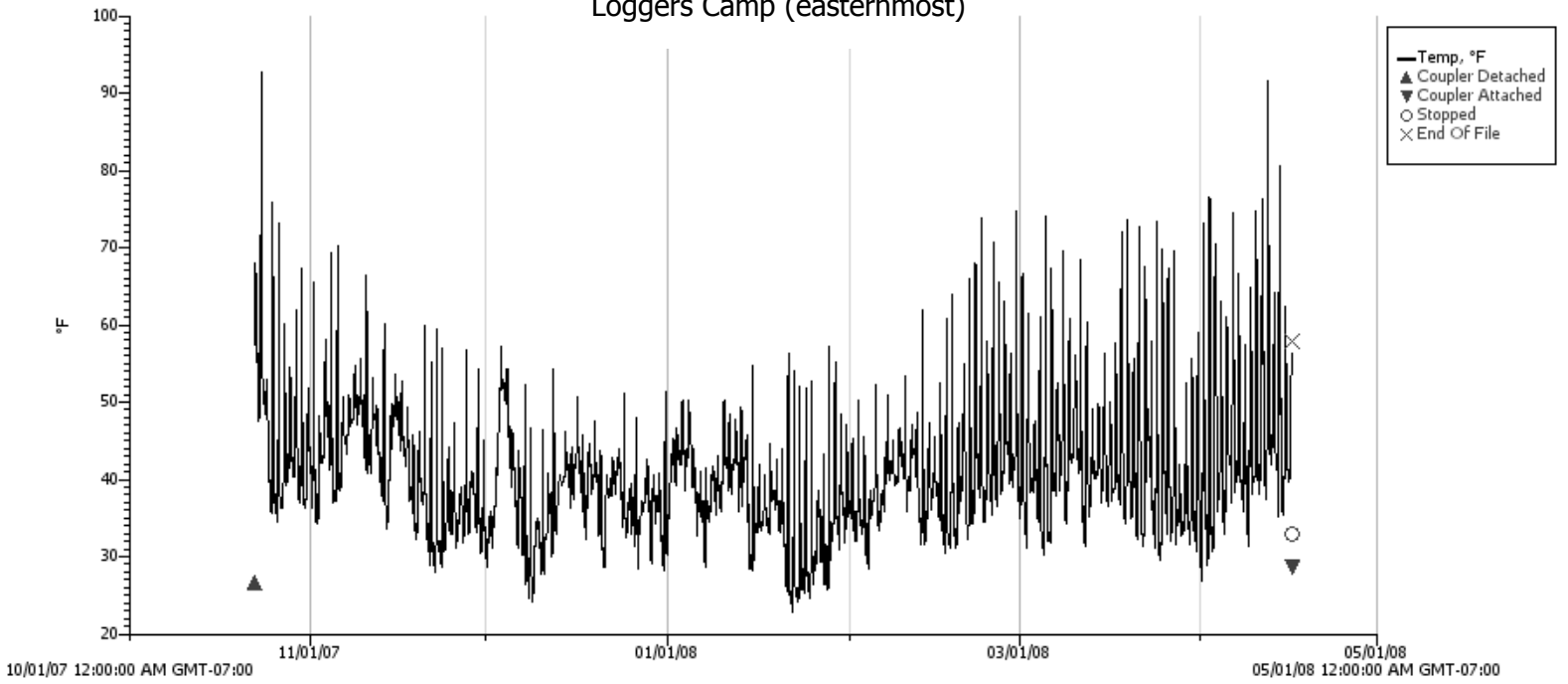


The Thicket (westernmost)

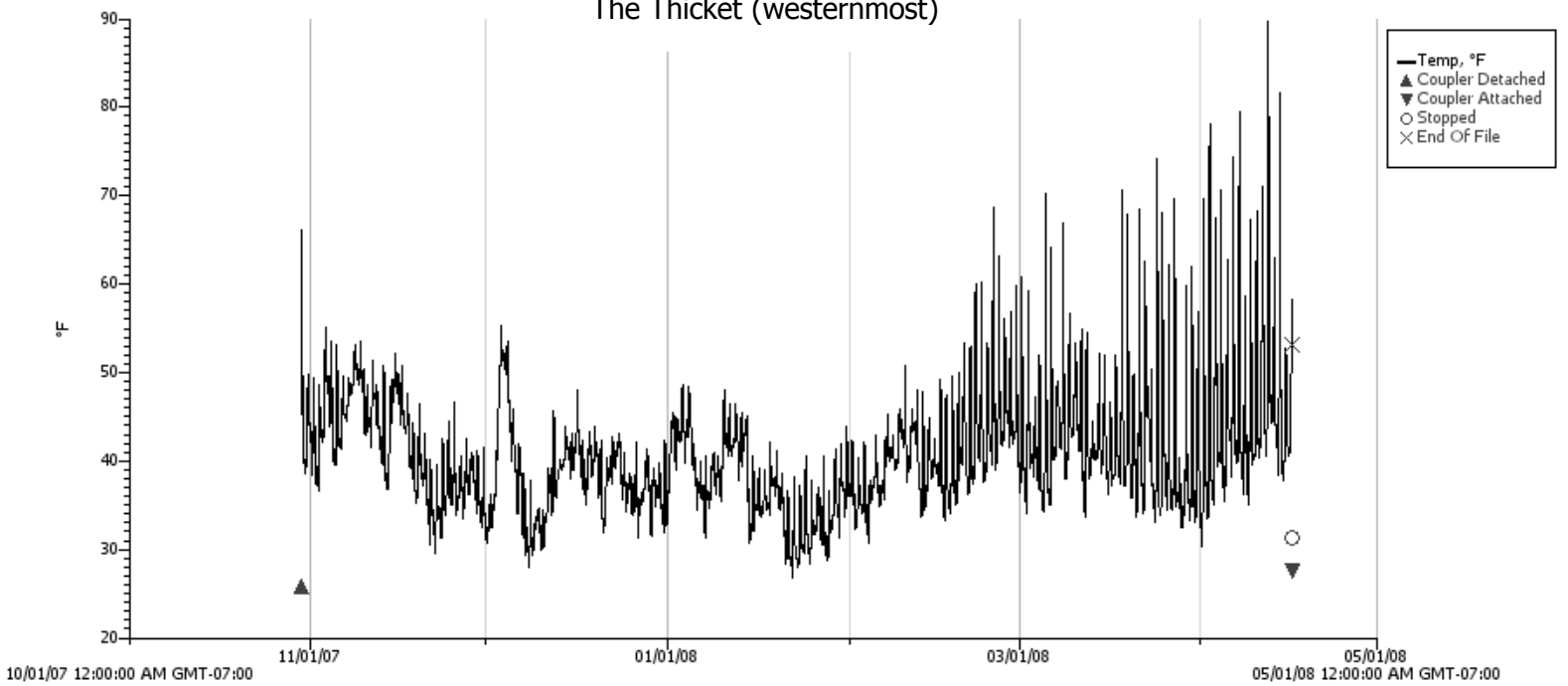


LOPEZ HILL MICROCLIMATES 2007-2008: TEMPERATURES

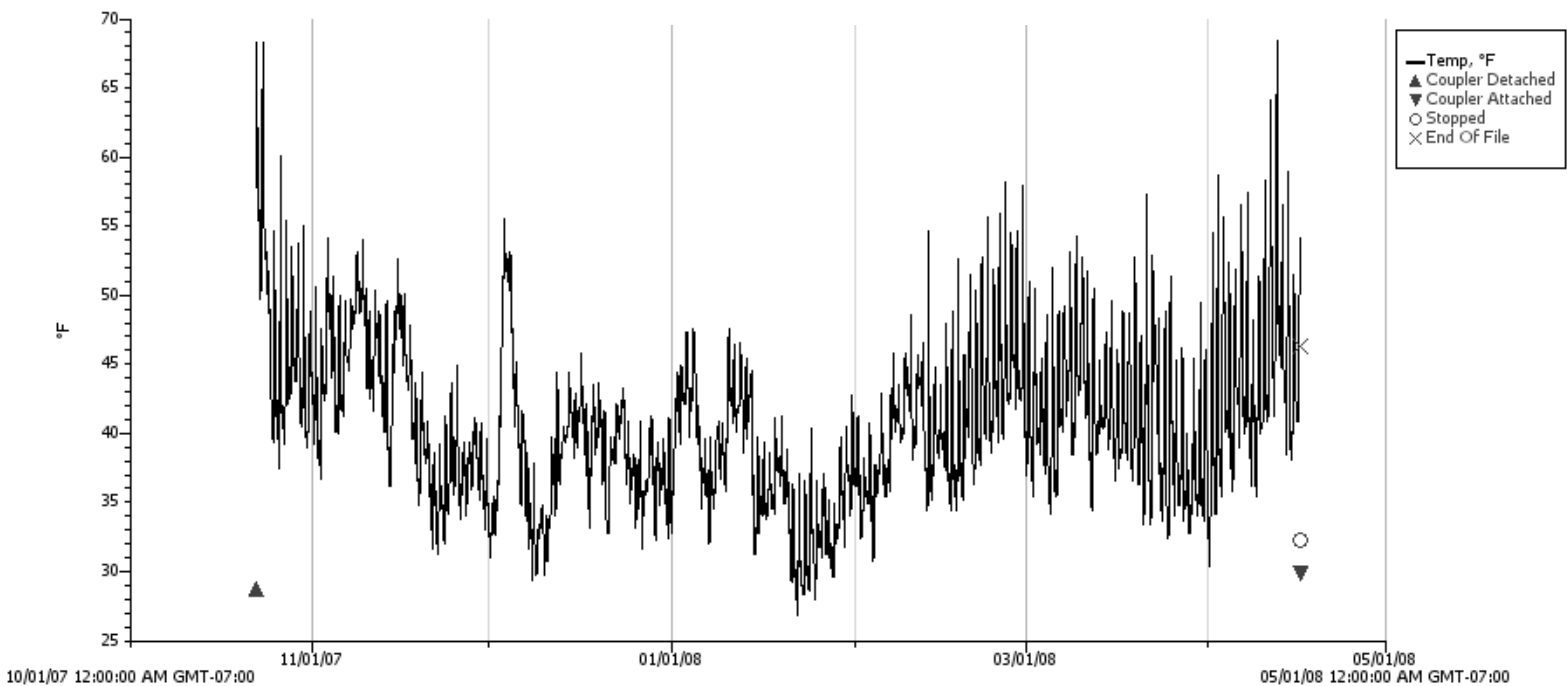
Loggers Camp (easternmost)



The Thicket (westernmost)



Licorice Hill (ridge center east)



Spanish Moss (ridge center west)

